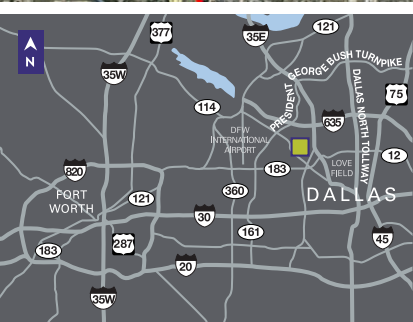
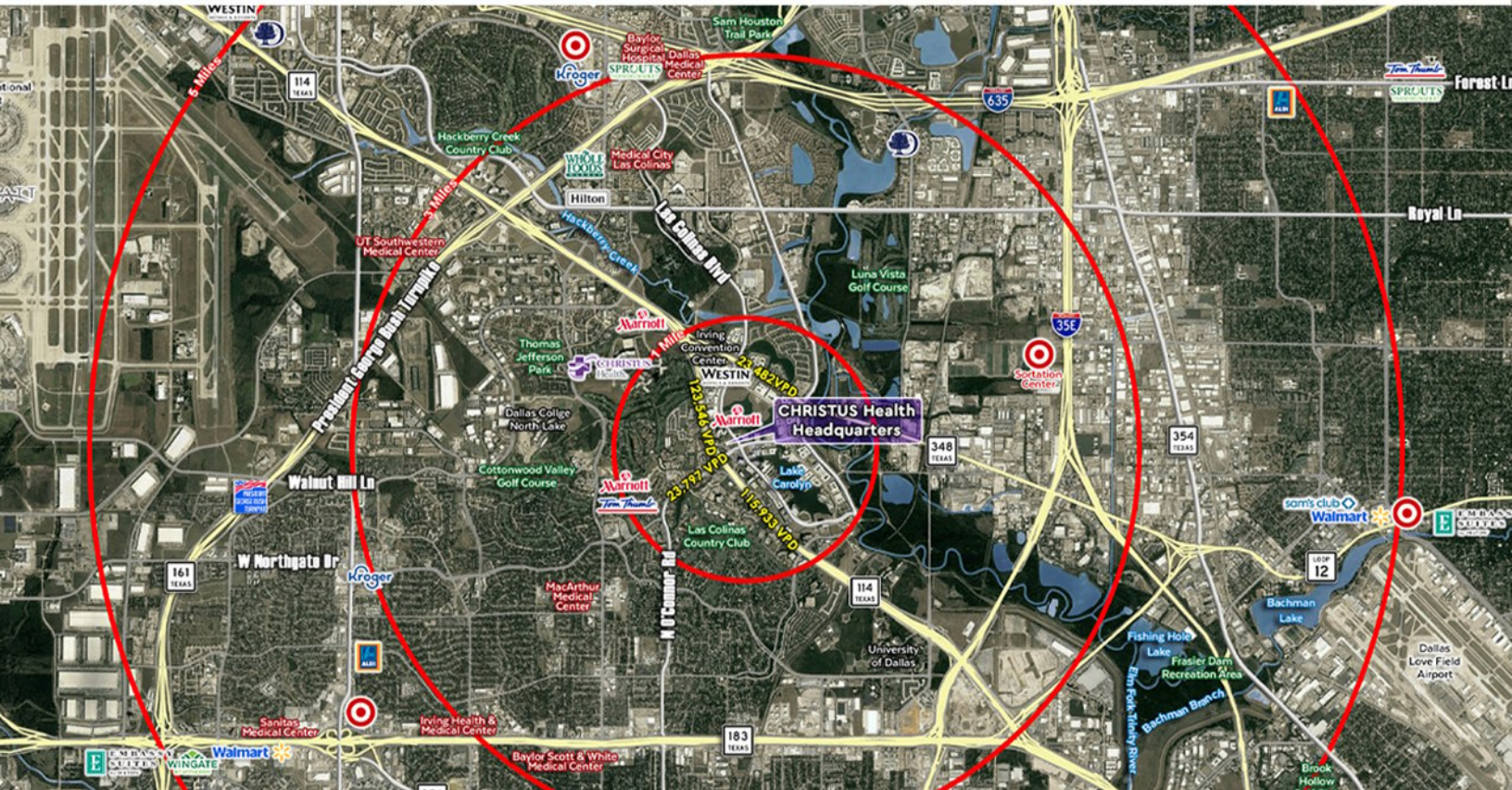
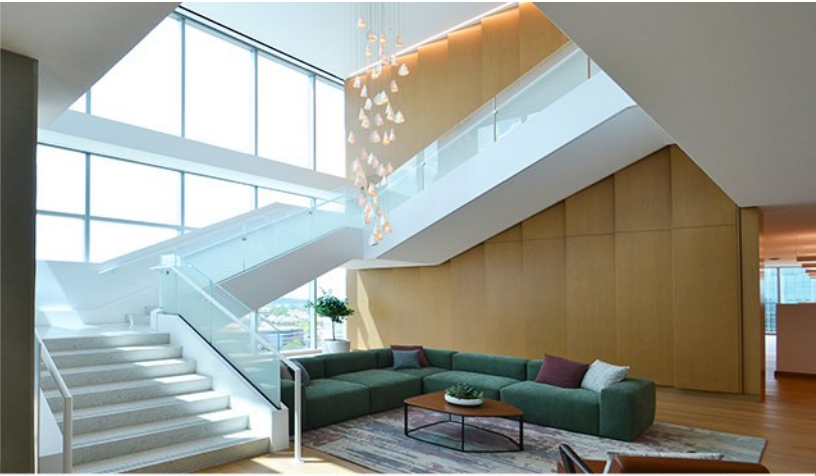


▶ CHRISTUS HEALTH HEADQUARTERS

5101 North O'Connor Blvd in Irving, Texas 75062



IN THE HEART OF THE LAS COLINAS URBAN CENTER



	VEHICLES PER DAY
Hwy 114 north of N O'Connor Rd	123,546
Hwy 114 south of N O'Connor Rd	115,933
N O'Connor Rd west of Hwy 114	23,797
W Northwest Hwy west of N O'Connor Rd	23,482

	MEDIAN INCOME
1 Mile	\$103,761
3 Miles	\$92,722
5 Miles	\$88,347

	POPULATION
1 Mile	15,791
3 Miles	101,929
5 Miles	286,042



Kevin O'Neil

214-893-4189

koneil@frpltd.com



WWW.FRPLTD.COM

▶ CHRISTUS HEALTH HEADQUARTERS

5101 North O'Connor Blvd in Irving, Texas 75062



FOR DETAILED DEMOGRAPHICS VISIT
frpltd.com/properties/christus-health-headquarters

Lat/Lon: 32.87/-96.9424

Christus Headquarters Irving, TX 75039	1 mi radius	3 mi radius	5 mi radius
Population			
2025 Estimated Population	15,791	101,929	286,042
2030 Projected Population	14,250	95,451	268,738
2020 Census Population	13,787	97,591	285,882
2010 Census Population	6,046	75,964	243,125
Projected Annual Growth 2025 to 2030	-2.0%	-1.3%	-1.2%
Historical Annual Growth 2010 to 2025	10.7%	2.3%	1.2%
2025 Median Age	33.5	32.2	32.0
Households			
2025 Estimated Households	8,956	42,086	107,535
2030 Projected Households	8,215	39,880	102,124
2020 Census Households	8,295	40,567	105,546
2010 Census Households	3,746	30,918	90,041
Projected Annual Growth 2025 to 2030	-1.7%	-1.0%	-1.0%
Historical Annual Growth 2010 to 2025	9.3%	2.4%	1.3%
Race and Ethnicity			
2025 Estimated White	42.3%	31.2%	29.5%
2025 Estimated Black or African American	20.1%	17.4%	15.3%
2025 Estimated Asian or Pacific Islander	19.3%	21.3%	18.1%
2025 Estimated American Indian or Native Alaskan	0.5%	1.1%	1.3%
2025 Estimated Other Races	17.7%	29.0%	35.8%
2025 Estimated Hispanic	23.0%	36.5%	45.3%
Income			
2025 Estimated Average Household Income	\$151,419	\$126,376	\$116,156
2025 Estimated Median Household Income	\$103,761	\$92,722	\$88,347
2025 Estimated Per Capita Income	\$85,991	\$52,276	\$43,716
Education (Age 25+)			
2025 Estimated Elementary (Grade Level 0 to 8)	1.8%	8.2%	13.4%
2025 Estimated Some High School (Grade Level 9 to 11)	2.4%	4.5%	7.1%
2025 Estimated High School Graduate	5.4%	16.9%	19.1%
2025 Estimated Some College	12.1%	13.3%	13.5%
2025 Estimated Associates Degree Only	5.6%	6.1%	5.7%
2025 Estimated Bachelors Degree Only	45.5%	30.1%	24.5%
2025 Estimated Graduate Degree	27.1%	20.9%	16.6%
Business			
2025 Estimated Total Businesses	2,260	8,728	21,819
2025 Estimated Total Employees	45,597	122,746	281,759
2025 Estimated Employee Population per Business	20.2	14.1	12.9
2025 Estimated Residential Population per Business	7.0	11.7	13.1



Kevin O'Neil

📞 214-893-4189

✉️ koneil@frpltd.com



WWW.FRPLTD.COM