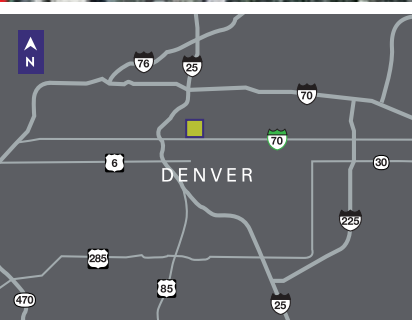
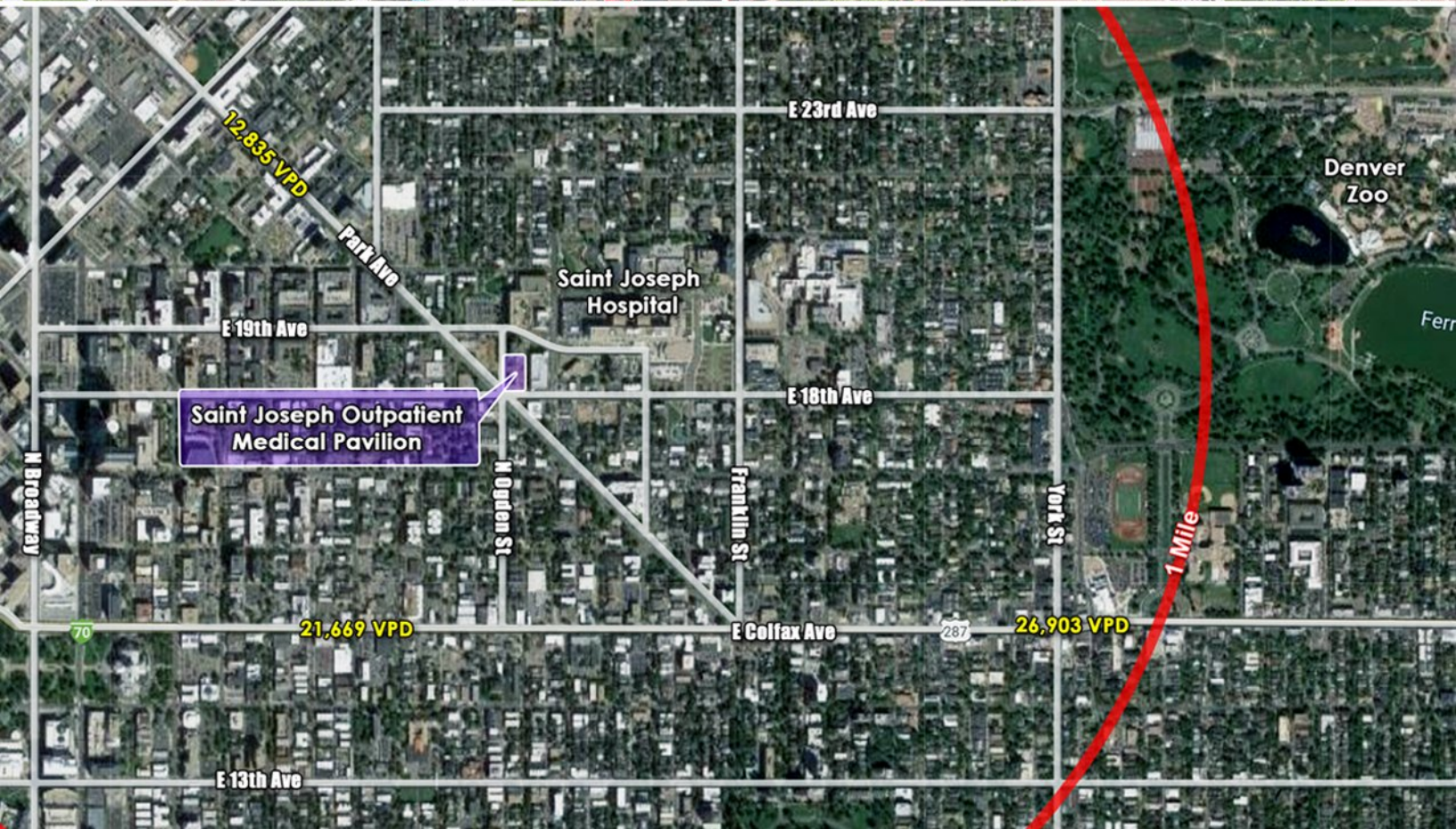


# ▶ ST JOSEPH OUTPATIENT MEDICAL PAVILION

NE Corner of 18th Ave @ N Ogden St in Denver, Colorado 80218



LOCATED NEAR SAINT JOSEPH HOSPITAL



	VEHICLES PER DAY
Highway 287 east of Park Ave	27,609
Highway 287 west of Park Ave	20,874
Park Ave north of East 19th St	12,835
Park Ave south of East 19th St	12,559

	MEDIAN INCOME
1 Mile	\$91,850
3 Miles	\$110,731
5 Miles	\$109,667

	POPULATION
1 Mile	49,904
3 Miles	251,162
5 Miles	499,356



Kevin O'Neil

214-893-4189

koneil@frpltd.com



WWW.FRPLTD.COM

# ▶ ST JOSEPH OUTPATIENT MEDICAL PAVILION

NE Corner of 18th Ave @ N Ogden St in Denver, Colorado 80218



FOR DETAILED DEMOGRAPHICS VISIT  
[frpltd.com/properties/saint-joseph-outpatient-medical-pavilion](http://frpltd.com/properties/saint-joseph-outpatient-medical-pavilion)

Lat/Lon: 39.7457/-104.9748

Saint Joseph Outpatient Medical Pavilion Denver, CO 80218	1 mi radius	3 mi radius	5 mi radius
<b>Population</b>			
2025 Estimated Population	49,904	251,162	499,356
2030 Projected Population	49,149	263,972	506,753
2020 Census Population	46,795	233,338	489,364
2010 Census Population	38,016	180,896	411,901
Projected Annual Growth 2025 to 2030	-0.3%	1.0%	0.3%
Historical Annual Growth 2010 to 2025	2.1%	2.6%	1.4%
2025 Median Age	33.7	34.8	34.9
<b>Households</b>			
2025 Estimated Households	30,656	136,504	242,555
2030 Projected Households	30,151	142,682	246,953
2020 Census Households	29,252	122,828	226,963
2010 Census Households	23,679	94,263	187,372
Projected Annual Growth 2025 to 2030	-0.3%	0.9%	0.4%
Historical Annual Growth 2010 to 2025	2.0%	3.0%	2.0%
<b>Race and Ethnicity</b>			
2025 Estimated White	71.1%	70.7%	67.6%
2025 Estimated Black or African American	11.3%	8.9%	8.0%
2025 Estimated Asian or Pacific Islander	3.4%	3.5%	3.7%
2025 Estimated American Indian or Native Alaskan	1.0%	1.1%	1.3%
2025 Estimated Other Races	13.3%	15.8%	19.5%
2025 Estimated Hispanic	17.6%	21.0%	25.7%
<b>Income</b>			
2025 Estimated Average Household Income	\$114,237	\$151,625	\$149,824
2025 Estimated Median Household Income	\$91,850	\$110,731	\$109,667
2025 Estimated Per Capita Income	\$70,959	\$82,778	\$73,067
<b>Education (Age 25+)</b>			
2025 Estimated Elementary (Grade Level 0 to 8)	1.2%	2.7%	4.0%
2025 Estimated Some High School (Grade Level 9 to 11)	2.0%	2.8%	4.0%
2025 Estimated High School Graduate	11.8%	9.6%	12.3%
2025 Estimated Some College	15.9%	13.4%	14.2%
2025 Estimated Associates Degree Only	4.6%	3.8%	4.3%
2025 Estimated Bachelors Degree Only	41.3%	41.4%	36.7%
2025 Estimated Graduate Degree	23.2%	26.3%	24.5%
<b>Business</b>			
2025 Estimated Total Businesses	6,117	23,513	39,865
2025 Estimated Total Employees	79,693	254,496	378,679
2025 Estimated Employee Population per Business	13.0	10.8	9.5
2025 Estimated Residential Population per Business	8.2	10.7	12.5



Kevin O'Neil

📞 214-893-4189

✉️ [koneil@frpltd.com](mailto:koneil@frpltd.com)



WWW.FRPLTD.COM